



# SAVE A LEG SAVE A LIFE FOUNDATION

## GENERAL PROGRAM CO-CHAIRMEN

Yazan Khatib, MD  
Craig Walker, MD

Desmond Bell, DPM  
Guy Pupp, DPM

## MULTIDISCIPLINARY ENDOVASCULAR TRACK CO-DIRECTORS

D. Christopher Metzger, MD  
Thomas McNamara, MD  
Aravinda Nanjundappa, MD  
Venkatesh Ramaiah, MD

Interventional Cardiology  
Interventional Radiology  
Interventional Cardiology  
Vascular Surgery

## SCHEDULE AT-A-GLANCE

Wednesday, September 1  
4:00 p.m. – 6:00 p.m. Registration Open

Thursday, September 2  
6:30 a.m. – 6:00 p.m. Registration Open  
7:00 a.m. – 8:00 a.m. Breakfast  
8:00 a.m. – 5:00 p.m. General Session  
10:00 a.m. – 4:00 p.m. Exhibits Open  
12:00 p.m. – 1:00 p.m. Lunch  
5:30 p.m. – 7:00 p.m. Exhibitor Reception

Friday, September 3  
7:00 a.m. – 4:00 p.m. Registration Open  
7:00 a.m. – 8:00 a.m. Breakfast  
8:00 a.m. – 5:00 p.m. Concurrent Sessions  
10:00 a.m. – 4:00 p.m. Exhibits Open  
12:00 p.m. – 1:00 p.m. Lunch  
1:00 p.m. – 5:00 p.m. Concurrent Sessions  
6:30 p.m. – 8:30 p.m. Foundation Dinner

Saturday, September 4  
7:00 a.m. – 1:00 p.m. Registration Open  
7:00 a.m. – 8:00 a.m. Breakfast  
8:00 a.m. – 5:00 p.m. Concurrent Sessions  
10:00 a.m. – 2:00 p.m. Exhibits Open  
12:00 p.m. – 1:00 p.m. Lunch  
1:00 p.m. – 5:00 p.m. Hands-On Workshops  
5:00 p.m. Adjourn

### Endovascular Highlights

Full Agenda available at [www.savealegsavealife.com](http://www.savealegsavealife.com)

## INVITED ENDOVASCULAR FACULTY

- Charles Andersen, MD** Madigan Army Medical Center TACOMA, WA
- Nilesh Balar, MD** Montefiore Medical Center NEW YORK, NY
- Nelson Lim Bernardo, MD** McGuire VA Medical Center RICHMOND, VA
- Frank Bunch, MD** Cardiology Assoc. of Mobile MOBILE, AL
- Joseph Cavorsi, MD** St. Joseph Medical Center READING, PA
- Nick G. Cavros, MD** Winston Salem Cardiology WINSTON SALEM, NC
- Raymond Datillo, MD** Cardiology Consultants Topeka TOPEKA, KS
- Cornelius Davis, III, MD** Wellspring CardioVascular HOUSTON, TX
- Tom Davis, MD** St. John Hospital DETROIT, MI
- Eric Dippel, MD** Midwest Cardiovascular Research Foundation DAVENPORT, IA
- Caroline Fife, MD** Intellicure, Inc. THE WOODLANDS, TX
- Agostino Ingraldi, MD** Cardiovascular Institute of the South LAFAYETTE, LA
- Vinay Kumar, MD** Endovascular Center LAUREL, MS
- William Marston, MD** UNC School of Medicine CHAPEL HILL, NC
- Thomas McNamara, MD** David Geffen School of Medicine at UCLA LOS ANGELES, CA
- D.Christopher Metzger, MD** Wellmont Holston Valley Heart Institute KINGSPORT, TN
- Aravinda Nanjundappa, MD** West Virginia University CHARLESTON, WV
- Venkatesh Ramaiah, MD** Arizona Heart Institute PHOENIX, AR
- Rex Teeslink, MD** T-Med, Inc. AUGUSTA, GA
- Craig Walker, MD** Cardiovascular Institute of the SOUTH HOUMA, LA
- Barry S. Weinstock, MD** Orlando Regional Medical Center ORLANDO, FL
- Mark Wholey, MD** UPMC Shadyside Hospital PITTSBURGH, PA
- Bret Wiechmann, MD** Vascular and Interventional Physicians GAINESVILLE, FL

### COMPLIMENTARY REGISTRATION WHEN YOU BOOK A 3 NIGHT STAY AT OUR HOST HOTEL, THE PEABODY ORLANDO.

For more information visit [www.savealegsavealife.com/hotel](http://www.savealegsavealife.com/hotel)

### Registration Includes:

- CME/CNE Accredited Courses
- 3 Complimentary breakfasts
- 3 Complimentary lunches
- Exhibitor cocktail reception
- Reduced hotel room rate of \$109

Register online  
[www.savealegsavealife.com/reg](http://www.savealegsavealife.com/reg)

# NATIONAL CONFERENCE

SEPTEMBER 2-4, 2010  
ORLANDO, FL

### CONFERENCE CO-CHAIRMEN

**Desmond P. Bell, Jr., DPM**  
Limb Salvage Institute  
Jacksonville, FL

**Yazan Khatib, MD**  
First Coast Cardiovascular Institute  
Jacksonville, FL

For more info call 337.993.7920 | [www.savealegsavealife.com](http://www.savealegsavealife.com)



## FRIDAY, SEPTEMBER 3RD

### **Setting the Stage for a Successful Case, 3**

Tips and Tricks in Access and Crossing

Step by Step Approach to Avoiding Operator Fatigue AND Patient Combativeness

### **Vascular Access Update**

- Antegrade is Superior Access for the Distal Infra-Inguinal & BTK PAD
- Direct SFA Puncture Step by Step Technique
- Brachial vs. Femoral Access for Aorto-Iliac Disease
- Micro Puncture Access Reduces Complications
- Step by Step Approach to Successful Pedal Access and Crossing
- Tips & Tricks for Difficult Aorto Iliac Bifurcation Including the Post Aorto-Bifemoral Bypass Patient with Infra-Inguinal Disease
- Should US Guidance for Access be the Gold Standard
- Micro Puncture Access Reduces Complications
- Access & Closure Devices a 40 Year Perspective
- Moderated Complex Case Reviews

### **How Do the Experts Achieve 100% Successful CTO Crossing?**

- Good 'OI Wire/Catheter Techniques: Which Wires, Which Catheters?

Tips for Modifying Catheters and Wires

- Most Failures to Cross are Due to Failure to See the Existing Channel

The "Passage of Dippel":

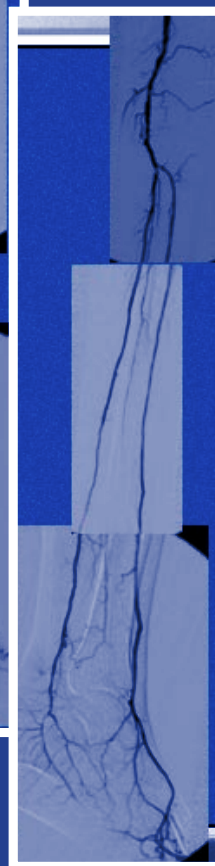
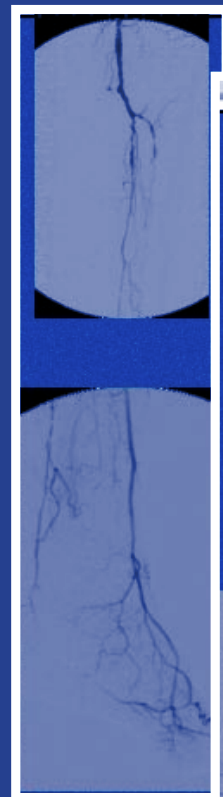
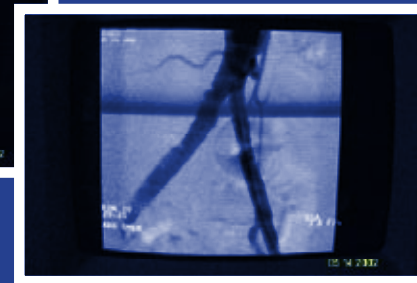
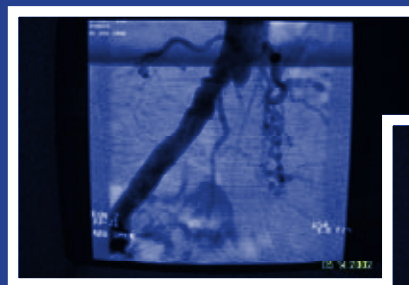
- Re-Entry Devices: Outback, Pioneer.
- Re-Entry Extreme
- The New Crossing Devices: Are They Worth the Added Expense?
- When All Crossing Fails a Hybrid Endo/Open Approach Saves the Day
- Moderated Complex Case Reviews

### **Conquering the Femoro-Popliteal Beast**

- Role of Cooling, Heating, and Scoring PTA in Femoro Popliteal Disease: Specialty Ballons Do They Improve Outcomes?
- Bare Metal Stenting of the Femoro-Popliteal Segment,: On a Lighter Note
- Bare Metal Stenting of the Femoro-Popliteal Segment,: The Dark Side Predictors and Clinical Implications of Stent Fractures in SFA
- Is There a Proven Advantage of Atherectomy & In What Setting?
- Is There a Role for Plaque "Pretreatment/Modification"?
- Why Not Cover Stent All Long Lesions?
- Are Drug Eluting Stents the Answer?
- How Do the Following Variables Affect the Choice of Modality Used in Your Practice: Age, DM, Lesion Length, Lesion Location, Patient Mobility Status, Access Issues, Rutherford Class and Cost?

### **The Vexing Problems of the Limb Salvage Specialist (Part 1): Calcium & ISR**

- Heavy Calcium is Best Handled with Orbital Atherectomy
- Heavy Calcium is Best Handled with Directional Turbohawk Atherectomy
- Heavy is best handled with Excisional Atherectomy
- Heavy Calcium is Best Handled with Third Generation Interwoven Stent Design
- The Therapeutic implications of IVUS in Characterizing Adventitial vs Intimal Ca++.
- Should we IVUS all Calcific Lesions?
- How Best to Handle the Rising Epidemic of Femoro-Popliteal ISR?
- Most Successful is a Customized Approach Depending on Age, DM, Lesion Length & Location, Access Issues, Rutherford Class, Cost, Runoff, Presence of Fracture and Underdeployed Stents
- Moderated Complex Case Reviews



**AWARD CEREMONY**  
**THE THREE BEST COMMUNITY LIMB SALVAGE PRESENTATIONS**  
(each will receive an IPAD)

## SATURDAY, SEPTEMBER 4TH

### **Imaging & Diagnostic Perspectives**

- Better Imaging Leads to Better Outcome, Tips and Tricks, Angles, Filters, Subtraction vs. Non-Subtraction, the Moving Patient
- Where Does CTA, MRA & Duplex US Fit in the Management of the CLI Patient: On a Bright Note
- CTA, MRA & Duplex US in the management of the CLI Patient: The Dark Side!
- Selective Angiography is most cost effective approach.
- Is Ivus Underused in PAD Interventions?
- Duplex Guided Peripheral Interventions?

### **BTK Interventions**

- Surgical Bypass Perspective and Lessons Learned
- Forget Bypass in CLI, This is an "Endovascular First" Setting
- Optimizing Balloon Angioplasty, The Concept of Focal Force
- Drug Eluting Balloons: Is it the Tooth Fairy or is it for Real?
- Atherectomy BTK is it better than Balloon angioplasty Which modality in what anatomy?
- Stenting BTK: Bare and Drug Eluting, when should it be considered
- Pedal Arch Reconstruction when, Why & How?
- Moderated Complex Case Reviews

### **The Vexing Problems of the Limb Salvage Specialist (Part 2): Thrombus & Embolic complications**

- Thrombolysis and Thrombus Specific Therapy in the CLI Patient, PulseSpray, Mechanical, Pharmacologic & combined approaches
- Pharmacomechanical Lysis, Rheolytic Thrombectomy, Powerpulse SprayTechnique
- Distal Embolizations (with & without ISR): How to Avoid and How to Treat
- Moderated Complex Case Reviews

### **Aorto Iliac Interventions**

- Bare Metal or Covered Iliac Stenting? Is Covered Stent Better for Denovo Lesions?
- Keeping it Simple: "Smaller is Better" 4 Fr. Approach is More Cost Effective and Less Complicated
- Internal Iliac Artery Considerations for Therapy. Saving That Critical Limb!
- Moderated Complex Case Reviews

### **Complication Prevention & Management**

- Perforations
- Groin Complication Steps to Avoid: How to Recognize and Treat
- RP Bleed Endovascular management should be first option
- Moderated Complex Case Reviews
- Podiatrist perspective
- Building a Successful Comprehensive CV/Limb Salvage Program
- Moderated Complex Case Reviews